



ix SAP Business One Adapter

UNITED PLANET INTREXX XTREME
RELEASE 4.5







Content

1. Setup	4
1.1. Editing the portal.wcf file.....	4
1.1.1. Classpath.....	4
1.1.2. Library Path.....	4
1.2. Adding a new SBO Connection in the Integration Centre	4
2. Usage	7
2.1. Basic example – display all invoices	7
2.2. Advanced example – display invoice details.....	9

Writing Conventions

In this document, text passages will be displayed in *italics* when they relate to settings in the dialogs shown. Menu items that are available in context menus are also always available via the main menu. Main menu items will not be described if they are not available from the context menu. A description of general main menu items can be found in the [Center handbook](#). Programming code in the text will be displayed in the `Courier` font. Context menus can be opened by clicking with the right mouse button on the described element.

In the following, `<xtreme>` refers to your Intrex installation path; under Windows, for example, this is usually `C:\xtreme\`. On Linux, the normal install path is `/opt/xtreme/`. The following symbols will be used for designation of special kinds of information:

-  Important notes
-  Tips and background information
-  References to additional information in an Intrex Xtreme handbook
-  Directories
-  URLs
-  Buttons in dialogs or assistants

Background Knowledge

In order to understand this documentation, no special background knowledge is required.

1. Setup

1.1. Editing the portal.wcf file

Please edit the file *portal.wcf*, which you can find in the directory
`<xtreme>/org/<portalname>/internal/cfg/`

1.1.1. Classpath

Please add the directory including the *SAP JCO-jar* file.
 For example:

```
# Java Classpath (include wrapper.jar) Add class path elements as
# needed starting from 1
wrapper.java.classpath.1=C:\xtreme\lib\update
wrapper.java.classpath.2=C:\xtreme\lib/*.jar
wrapper.java.classpath.3=C:\xtreme\lib\remote/*.jar
wrapper.java.classpath.4=C:\xtreme\hsqldb\lib\hsqldb.jar
wrapper.java.classpath.5=C:\Program Files\SAP\SAP Business One DI
API\JCO\LIB*.jar
```

Please make sure that the paths to your installation folder are correct and you use a fitting number.

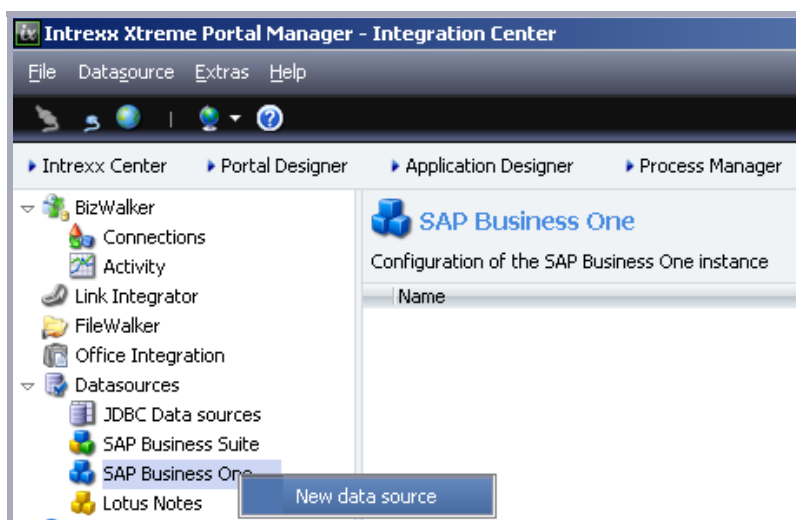
1.1.2. Library Path

In the *portal.wcf* you can also find the Java Library Path. There you have to add the SAP JCO-dll directory.

```
# Java Library Path (location of Wrapper.DLL or libwrapper.so)
wrapper.java.library.path.1=c:\xtreme\bin\windows\x86
wrapper.java.library.path.2=C:\Program Files\SAP\SAP Business One DI
API\JCO\LIB
```

1.2. Adding a new SBO Connection in the Integration Centre

The next step is to add a new connection to SAP Business One in Intrex. Please open your Portal Manager and go to the Integration Centre.

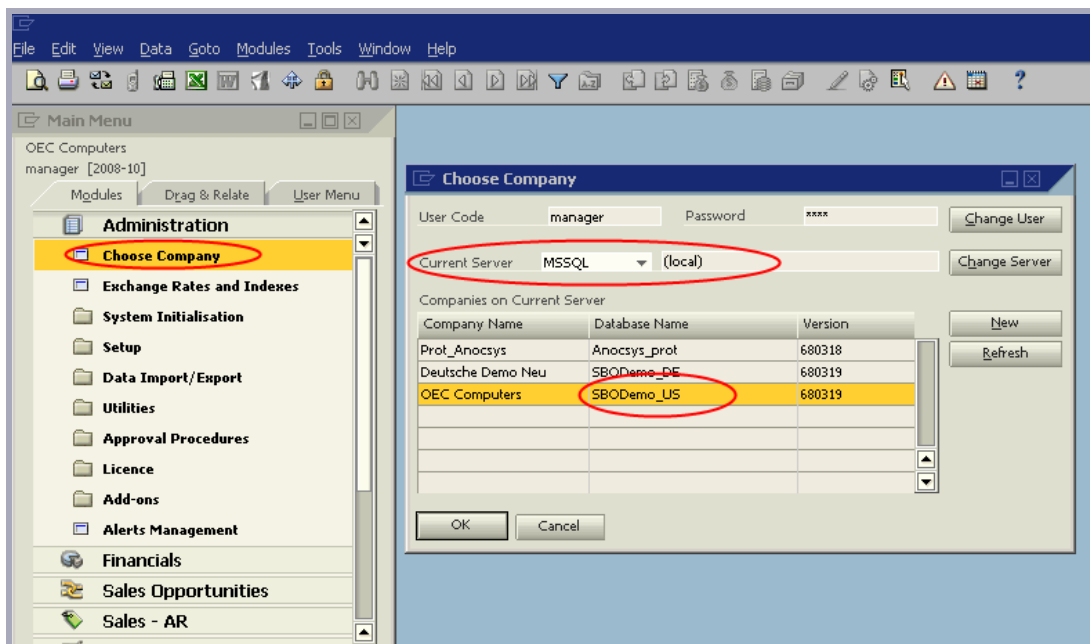


Then we have to configure the new SBO connection. Choose a name, e.g. *sbo*
 Next you have to select the type of database Business One is using and the database name. You also have to enter the server address and the port of the database as well as a

user with the necessary user rights. Since we're using the *SQL Server Authentication* the *Trusted Mode* has to be *No*.



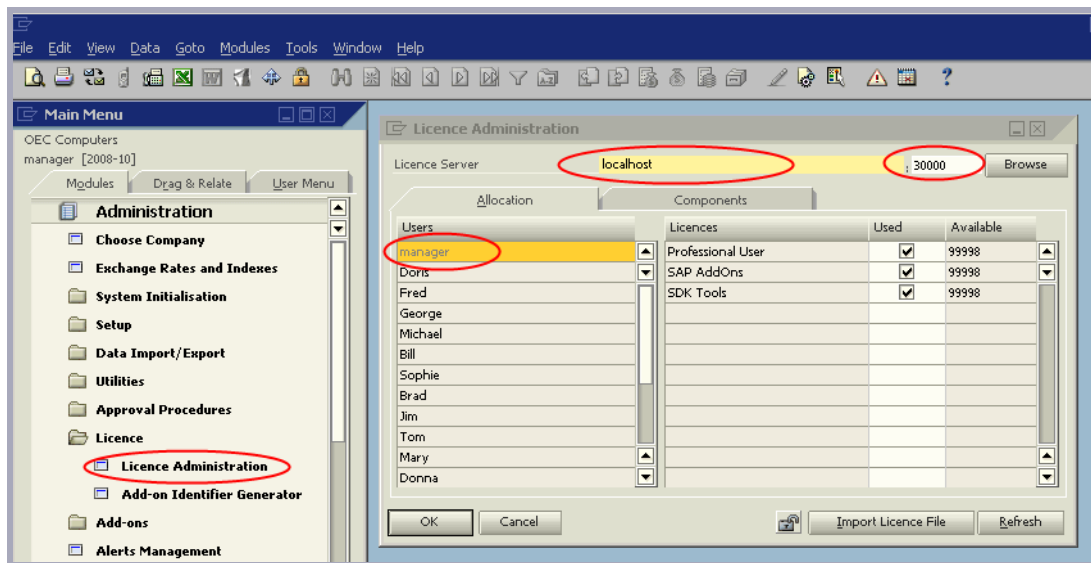
The database information can also be found within the SBO client:



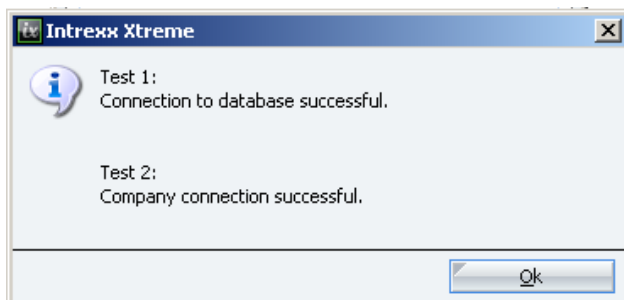
Click on **Next** after you are done with the database settings. Now you have to enter your SBO license server details. Please enter the server address, port and a business one user.



The license information can also be found within the Business One client:




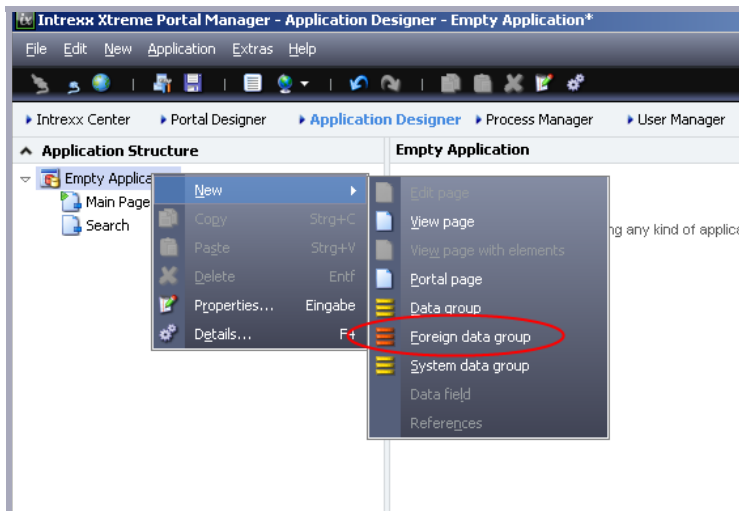
Finally click on *test connection*. If everything is okay the following popup should appear:



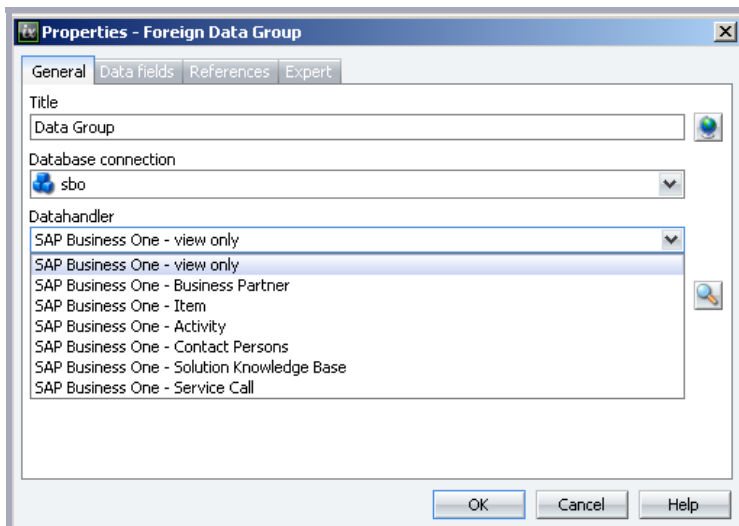
2. Usage

2.1. Basic example – display all invoices

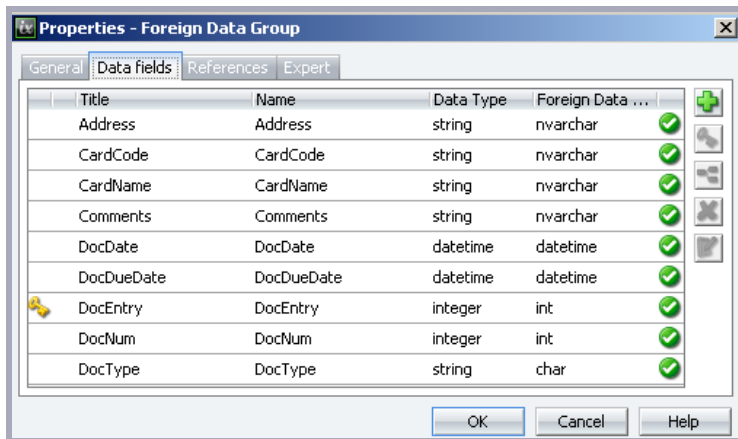
Now we will create a new application with a link to SBO data. Go to the Application Designer and create a new *Empty Application*. You can delete the existing data group and add a new *Foreign Data Group*. Therefore click on the application name, right-click and select  *New / Foreign data group*.



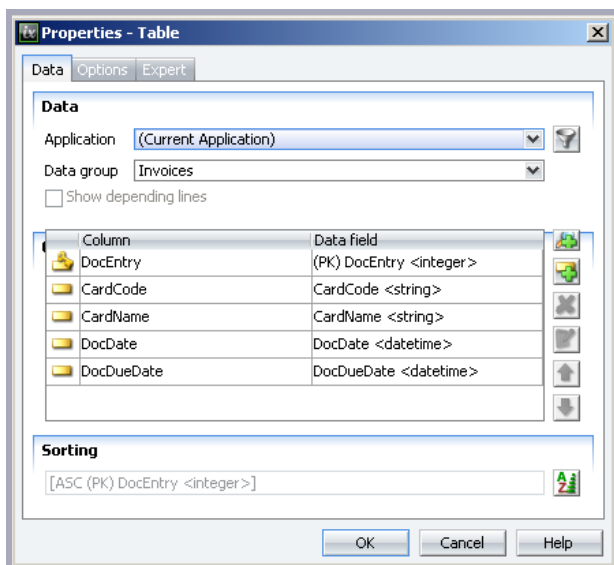
In the dialogue you have to select the Business One connection we just created, e.g. *sbo*. Then choose the fitting *Datahandler*. The title of the data group should be *Invoices*.



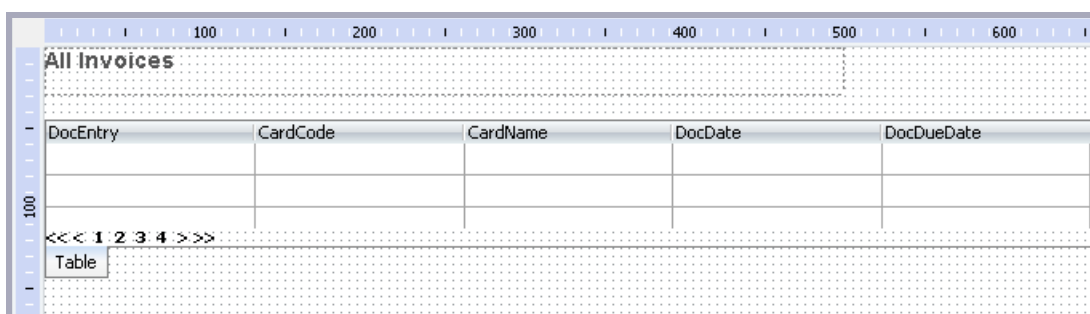
Then click on the magnifying glass on the right-hand side and choose the desired table. In our case we select the table *GINV* containing the invoices.



To display all the existing customers go to the main page and add a new *View Table*. Select the invoices data group.



Now the table should look like that:



Save the application and open the browser to see the result:

The screenshot shows the Intrex Xtreme SAP Business One Adapter interface. At the top left is the 'ix' logo. Below it are 'Home' and 'Extras' tabs. A 'Main Page' section contains a search bar. The main content area is titled 'All Invoices' and displays a table with the following columns: DocEntry, CardCode, CardName, DocDate, and DocDueDate. The table contains 20 rows of invoice data. At the bottom of the table, there is a pagination control showing 'Page 1 of 2' and 'Records Per Page' set to 20.

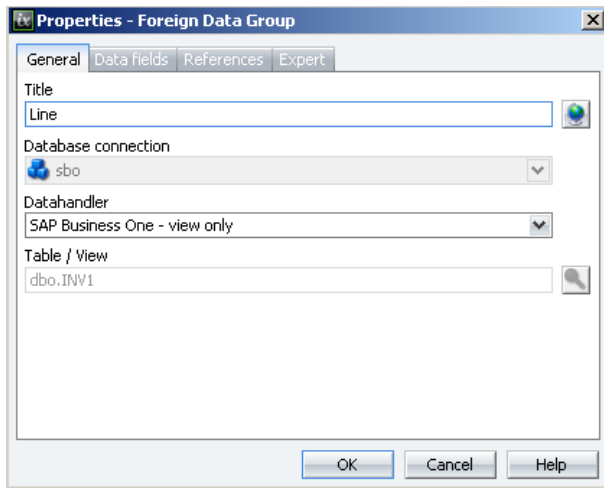
DocEntry	CardCode	CardName	DocDate	DocDueDate
1	C20000	Norm Thompson	05.01.2005 01:00	04.02.2005 01:00
2	C40000	Earthshaker Corporation	05.01.2005 01:00	04.02.2005 01:00
3	C50000	ADA Technologies	25.01.2005 01:00	24.02.2005 01:00
4	C41000	Bees Computers	25.01.2005 01:00	24.02.2005 01:00
5	C20000	Norm Thompson	16.01.2005 01:00	15.02.2005 01:00
6	C23900	Parameter Technology	04.01.2005 01:00	03.02.2005 01:00
7	C30000	Microchips	02.01.2005 01:00	01.02.2005 01:00
8	C30000	Microchips	18.01.2005 01:00	17.02.2005 01:00
9	C40000	Earthshaker Corporation	25.01.2005 01:00	24.02.2005 01:00
10	C20000	Norm Thompson	25.01.2005 01:00	24.02.2005 01:00
11	C42000	Mashina Corporation	25.01.2005 01:00	24.02.2005 01:00
12	C40000	Earthshaker Corporation	25.01.2005 01:00	24.02.2005 01:00
13	C42000	Mashina Corporation	25.01.2005 01:00	24.02.2005 01:00
14	C41000	Bees Computers	27.01.2005 01:00	28.02.2005 01:00
15	C50000	ADA Technologies	27.01.2005 01:00	28.02.2005 01:00
16	C42000	Mashina Corporation	28.01.2005 01:00	28.02.2005 01:00
17	C20000	Norm Thompson	28.01.2005 01:00	28.02.2005 01:00
18	C20000	Norm Thompson	01.01.2005 01:00	31.01.2005 01:00
19	C60007	Avarion Inc.	01.01.2005 01:00	31.01.2005 01:00
20	C60008	SED Technologies	01.01.2005 01:00	31.01.2005 01:00

2.2. Advanced example – display invoice details


Next right-click on the **invoices** data group **New** **view page with elements** to create a new view page containing the invoice details for one certain record.

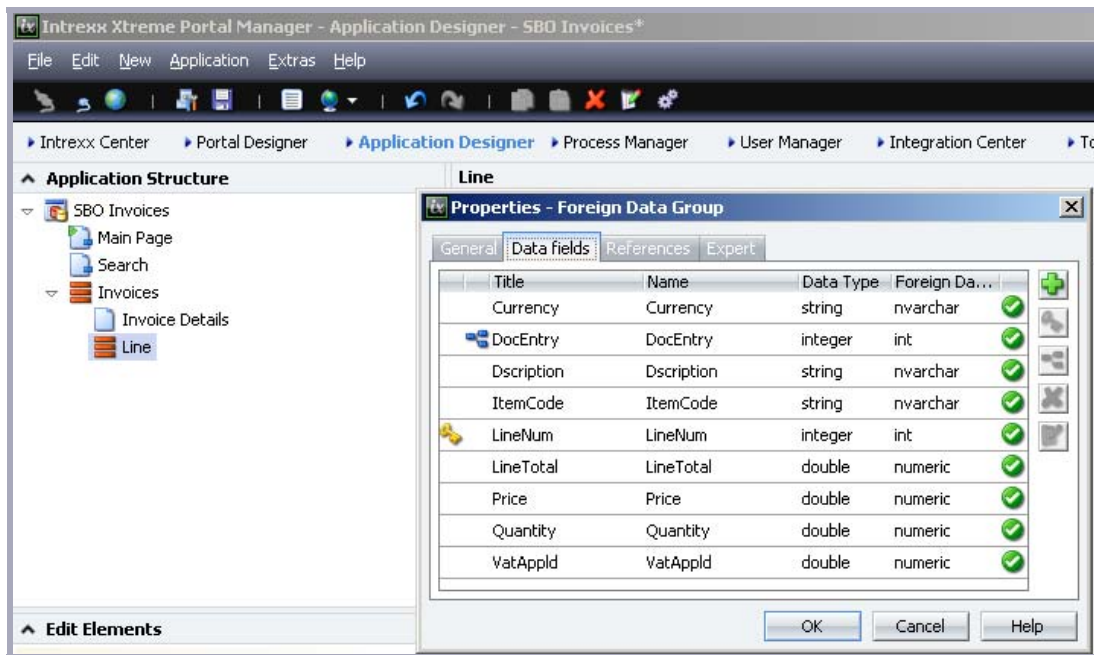
The screenshot shows a view page editor interface. At the top, there are markers for 100, 200, 300, 400, and 500. The main area contains a form layout with several fields: 'Customer No.' with a data source of {CardCode <string>}, 'Customer Name' with {CardName <string>}, 'Address' with {Address <string>}, 'Remarks' with {Comments <string>}, 'DocNum.' with {DocNum <integer>}, 'Posting Date' with {DocDate <datetime>}, 'Due' with {DocDueDate <datetime>}, and 'Type' with {DocType <string>}. The fields are arranged in a grid-like structure.

Rename the view page to *Invoice Details*. You can also edit the labels and rearrange the elements. Now right-click on the *invoices foreign data group* **New** **Foreign data group**. This time select the *INV1* table from our *sbo* connection. The fitting datahandler is *view only*.




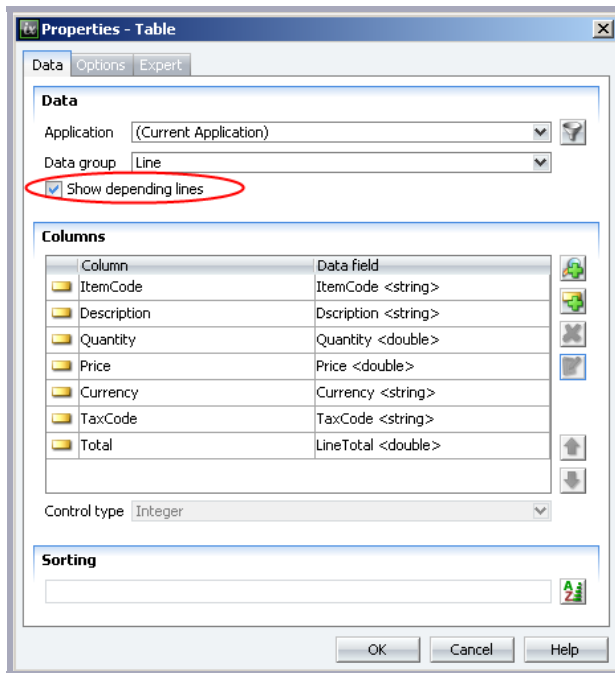
Then add all the data fields you like to use.

 We need the correct foreign key to get a working parent-child relationship between the two data groups. In our case the data field *DocEntry* is the correct foreign key so please remove the primary key symbol and add the foreign key symbol instead.



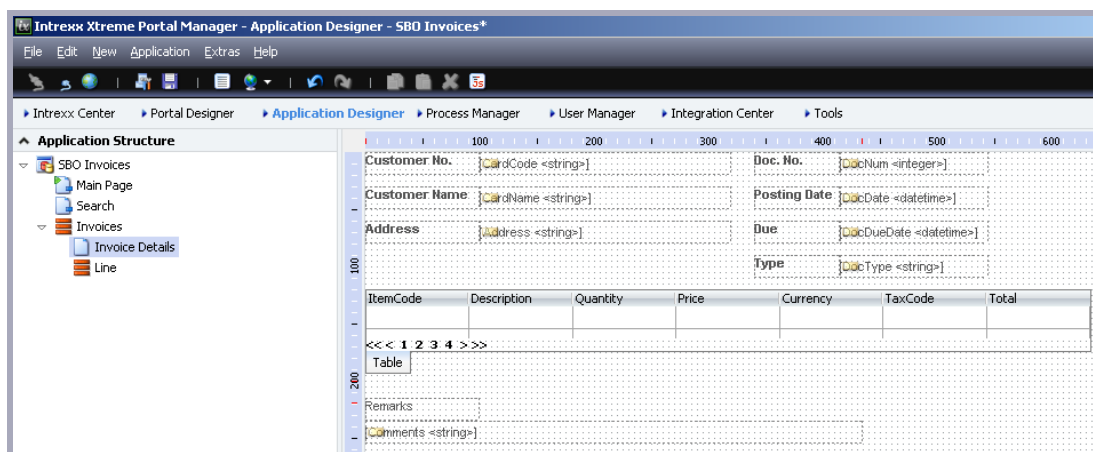
After that we go back to our *Invoice Details* view page and add a new table containing all the lines. Select the fitting columns.

 Please check *Show depending lines* so that only the lines belonging to that certain invoice will be shown!

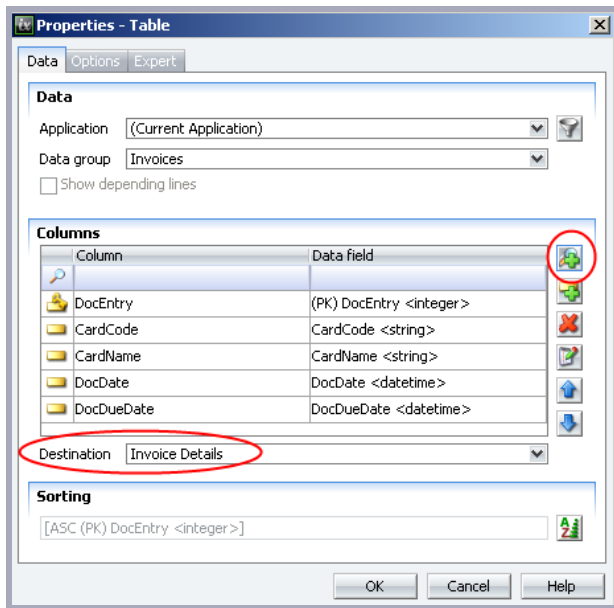


You can sort the table by the line number. Therefore click on the *from A to Z*-symbol on the bottom.

The *Invoice Details* page could then look like that:

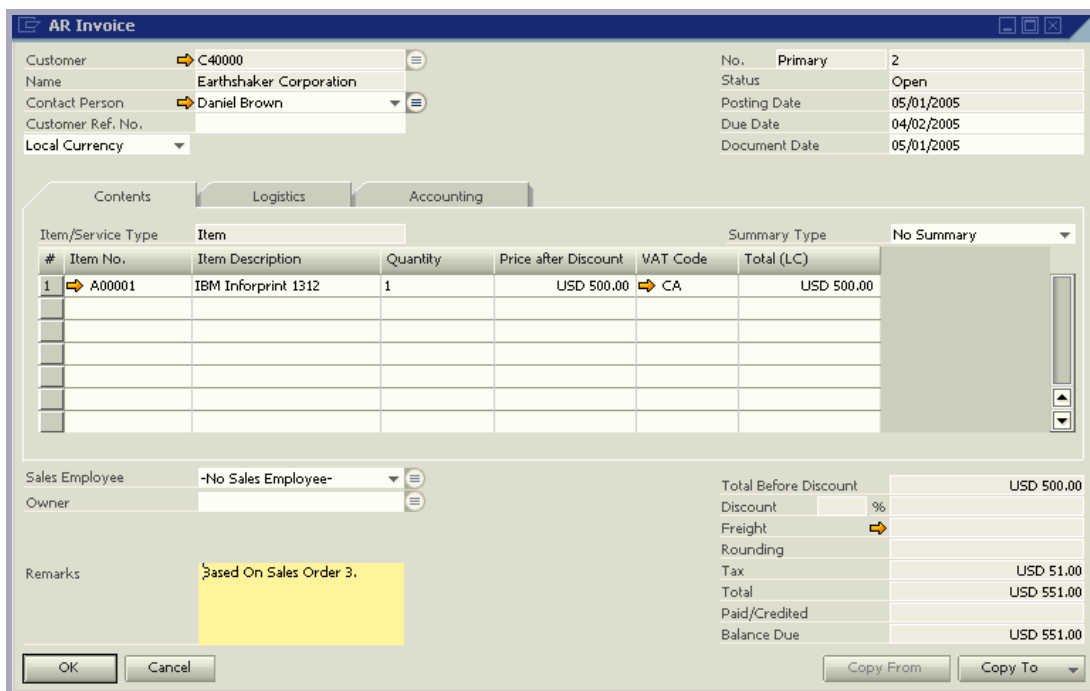


We also need a link between the table on the *Main Page* containing all invoices and the *Invoice Details* page of a certain record. So please go to the properties dialogue of the table and add the magnifying glass.



Finally save the application and open the browser to see the result.

The invoice details in SAP Business One:



Invoice Details in our demo application:



Home	SBO	Customer Area	System	Extras
------	-----	---------------	--------	--------

Main Page Search

Customer No.	C40000	Doc. No.	2	
Customer Name	Earthshaker Corporation	Posting Date	05.01.2005 01:00	
Address	208 Hollywood Ave Los Gatos CA 28989 USA		Due	04.02.2005 01:00
		Type	I	

ItemCode	Description	Quantity	Price	Currency	TaxCode	Total
A00001	IBM Inforprint 1312	1,00	500,00	USD	CA	500,00

Remarks
Based On Sales Order 3.