

ix Intrexx Xtreme Server on Windows Vista

Preface:

Windows Vista is not an operating system which should be used to run an Intrexx Xtreme Server in a live environment, for it is not a server operating system. The Intrexx Xtreme Server must only be installed on Windows Vista for test- and demonstration purposes. But of course it is legitimate to run the Intrexx Xtreme Client (Portal Manager) on Windows Vista.

In order to run the Intrexx Xtreme Server on Windows Vista it is necessary to install the Internet Information Server (IIS) and configure it afterwards. How to configure the IIS is described as follows.

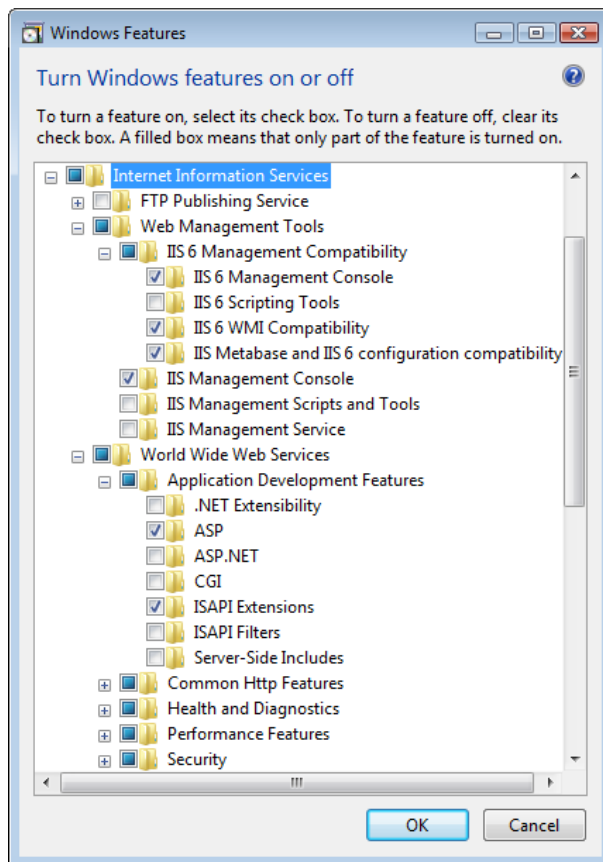
Further optional IIS settings can be found at the bottom of this document.

(Alternatively Tomcat Webserver can be used as Webserver instead of IIS. There is no need to configure the Tomcat Webserver, it must only be selected during the Intrexx Xtreme setup!)

Solution:

Please proceed as follows to install and configure IIS in order to support Intrexx Xtreme:

Open ➡ *control panel* ➡ *Turn Windows features on or off* ➡ Check *Internet Information Services* and check further boxes in this tree according to the screenshot below.



Confirm this dialogue with ➡ *OK* and finish the installation and configuration of IIS with a restart of the operating system. IIS will now be available as webserver for Intrexx.

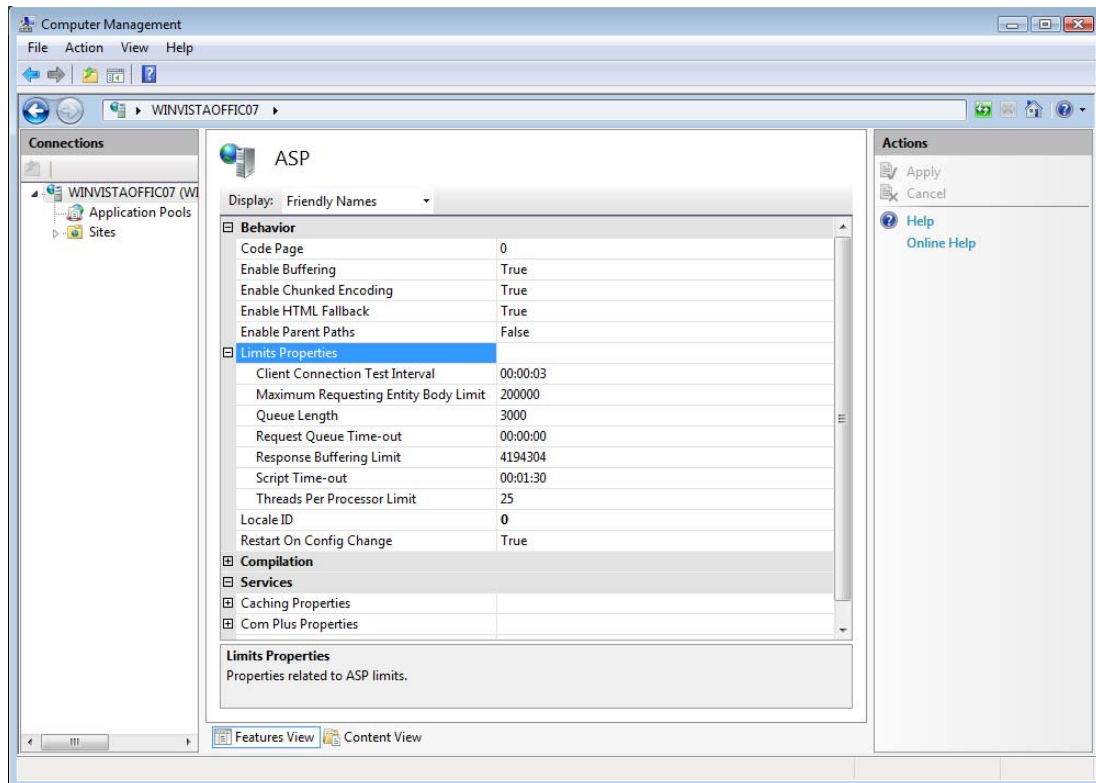
Optional settings

- **Settings for file up- and download**

The default settings for IIS allow only smaller files to be up- or downloaded in the web browser. Hence, the limit properties must be adjusted according to the requirements (limits in bytes). Proceed as follows:

Open ➔ *Computer Management* ➔ *Services and Applications* ➔ *IIS Manager* ➔ *ASP* ➔ *Limit Properties*.

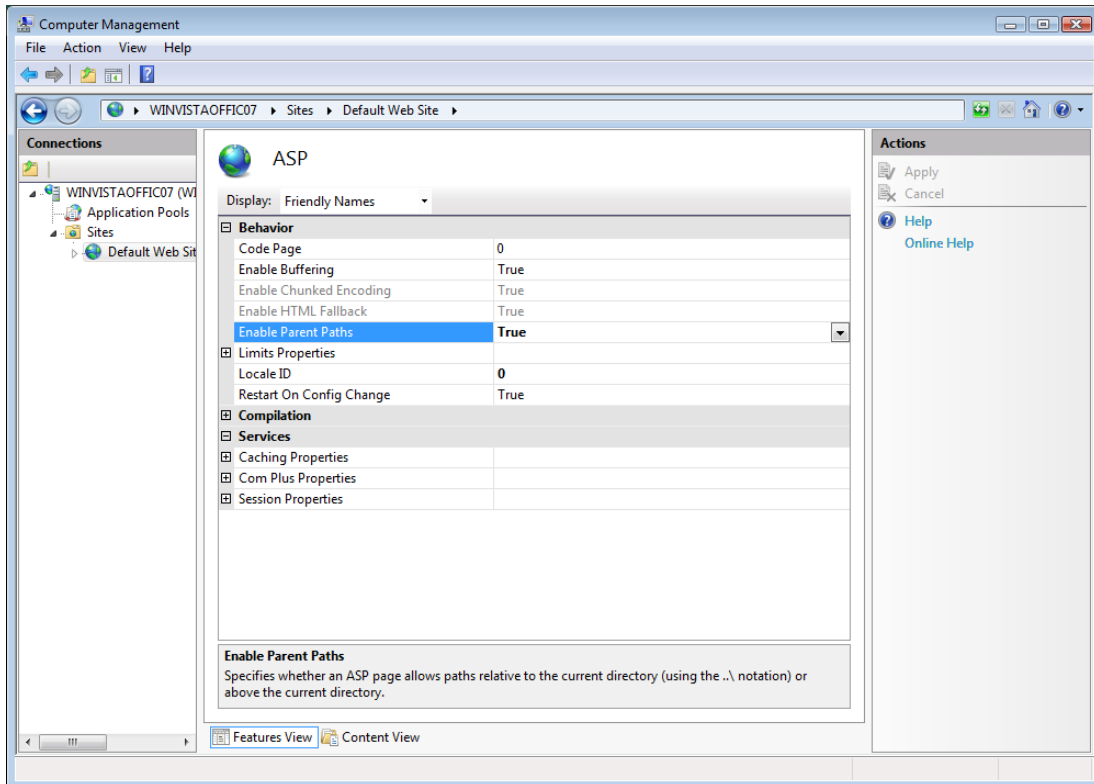
Upload: *Maximum Requesting Entity Body Limit*
Download: *Response Buffering Limit*



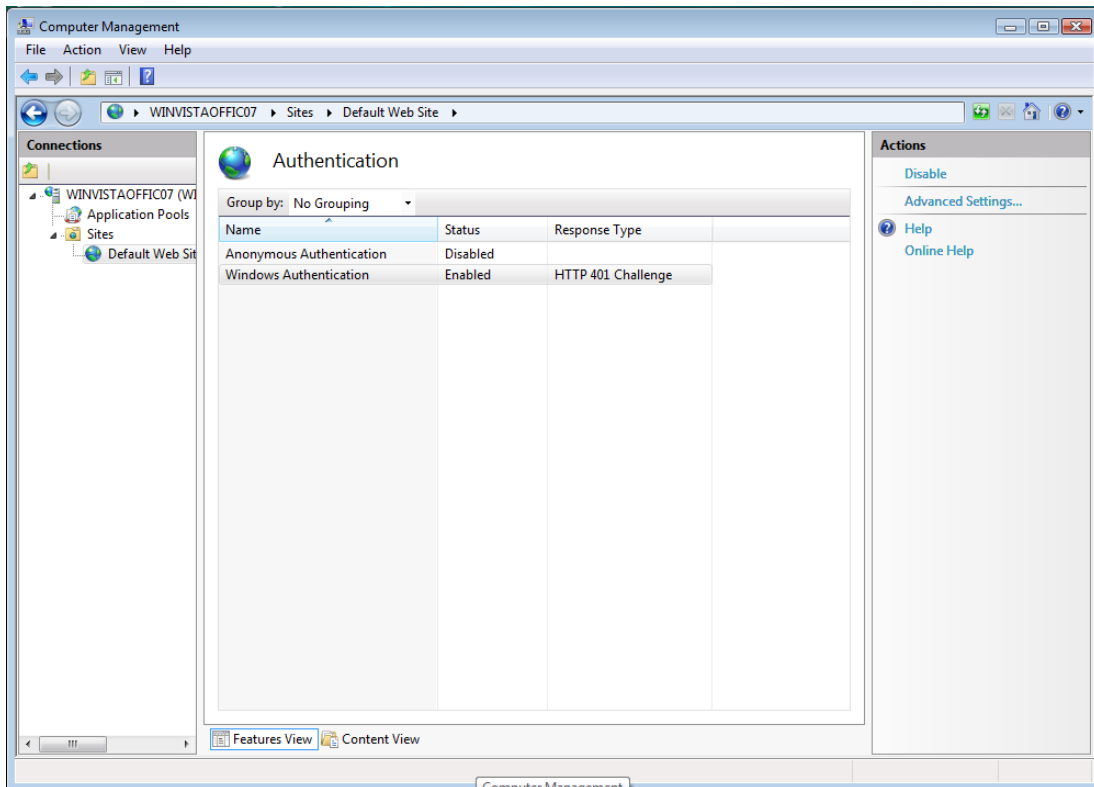
The settings take effect without restarting the www service.

- **Access portal in browser without virtual directory in URL**

In order to access the portal via `http://servername` the physical path of the default web site must point to `<xtreme>\org\portalname\external\htmlroot`. Additionally *enable parent paths* must be set as *TRUE* in the default web site's ASP properties.



If the portal shall operate with integrated Windows authentication (SSO), activate Windows authentication and deactivate anonymous authentication in the default web site's authentication settings.



Intrex Xtreme Server limitations on Windows Vista

When running Intrex Xtreme Server for test- and demonstration purposes on Windows Vista, one must expect the following limitations:

- Bizwalker and foreign data integration of Excel, Access and other OLE-DB datasources is not possible
- File upload is limited to approx. 30MB!!!
- Intrex service console must be started as administrator, otherwise there are not enough rights to start or stop a service
- The portal manager should also always be started as administrator in order to make sure, that there are always enough access rights e.g. to change IIS settings for the portal